



DIRECTOR'S SHOWCASE

4' - 5' - 6' *Space Saver Podium*

Maximum occupancy: 1 person

Maximum load: 300lbs.

Packing list:

- 1 - Space Saver Podium
- 2 - Wheel Plates
- 2 - 8" Wheels
- 1 - Boundary Rail
- 2 - Stabilizer bars
- 2 - Axle Bolt with nut
- 6 - 1/4" x 2" Hex Head Bolt
- 6 - 1/4" Nylon Lock Nut
- 4 - Wing nuts
- 2 - 1" Flat Washer
- 8 - 5/8" Flat Washer
- Adhesive Non-Skid Tape

Tools needed:

Two 7/16" wrenches/sockets
(for 1/4" nuts and bolts)

3/4" wrench/socket (for axle bolt)

9/16" wrench/socket (for axle nut)

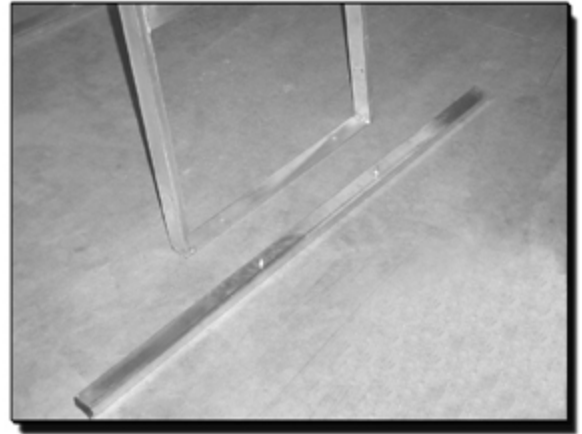


see reverse side for assembly instructions

ASSEMBLING YOUR SPACE SAVER PODIUM

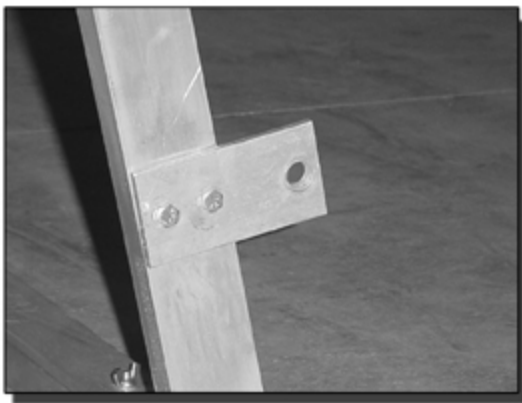
Step 1: Attach the Stabilizer Bars to the Space Saver Podium

Place the stabilizer bars on the ground (screws up) and align the holes of the podium with the screws on the stabilizer bars. Use two of the 1/4" nylon lock nuts to fasten the podium to the stabilizer bar.



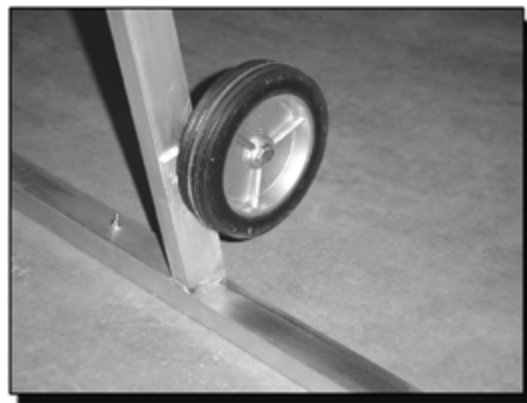
Step 2: Attach the wheel plates

Using two 1/4" x 2" bolts per plate and two 1/4" nylon lock nuts



Step 3: Attach the wheels

Using one axle bolt per wheel and two 1/4" nylon lock nuts



Step 4: Attach the boundary rail

Using two 1/4" x 2" bolts, two washers and two 1/4" nylon lock nuts



Step 5: Attach the non-skid tape

Attach one piece of tape to each step



DIRECTOR'S SHOWCASE

The company you look to for innovation