

1. What's Included:

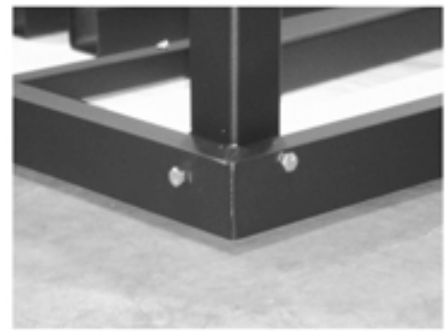
- 1 podium platform
- 1 boundary rail
- 1 step stair
- 4 podium legs
- 2 solid wood skirting
- 1 cut-out wood skirting
- 10 bolts, 10 washers
- 8 lock nuts, 2 wing nuts

2. Assembly Instructions:

Step #1

Attach the legs to the podium using 2 bolts, 2 washers and 2 lock nuts per leg.

Please note the hole alignment on the legs as seen in the photo on the right.



Step #2

Turn the podium over (right side up) and then insert the boundary rail into the square holes in the podium platform.

Step #3

Attach the podium step stair on either side of the podium using 2 bolts, 2 washers and 2 wing nuts.

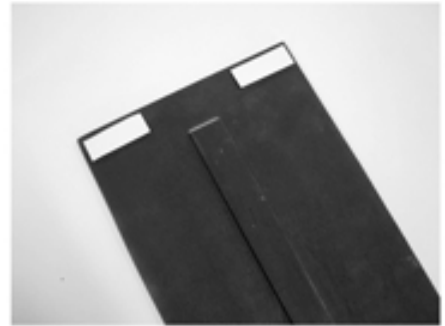
Be sure to insert the bolt from the outside of the leg so the wing nut is hidden inside the leg (as seen in the photo on the right).



Step #4

Attach the hook & loop strips to all of the wood skirting as seen in the photo on the right.

TIP: You may want to keep the sticker back on the hook & loop strips until you are ready to stick the wood skirting to the podium.



Step #5

Attach one SOLID wood skirting to the podium on the SAME SIDE as the boundary rail as seen in the photo on the right.

Attach the other SOLID wood skirting to the podium OPPOSITE the step stair.

Attach the CUT-OUT wood skirting to the podium OPPOSITE the boundary rail. This cut out will allow for the leg of a music stand to slide safely under the podium.



Your Finished Podium

